



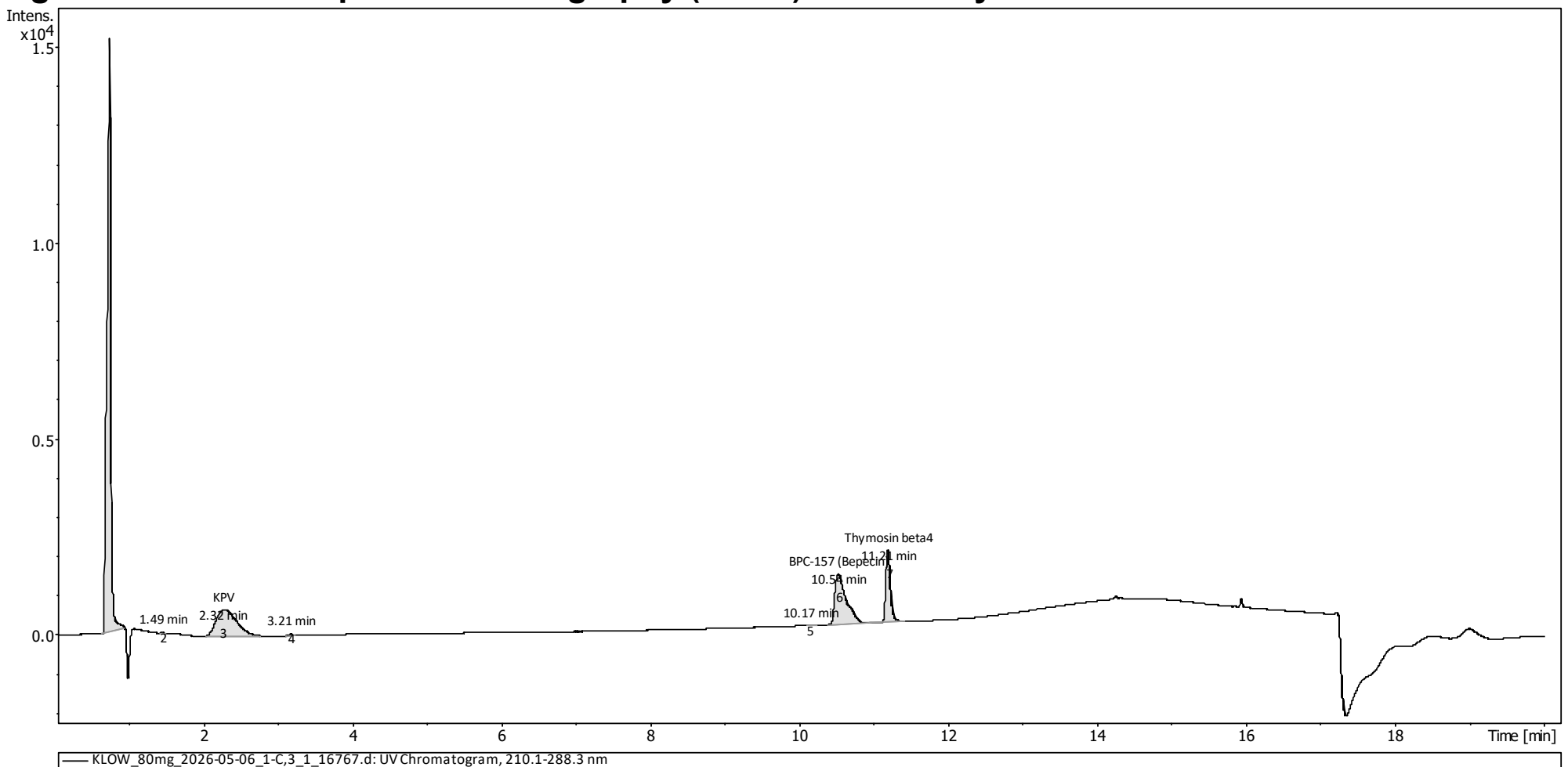
MZ Biolabs
2102 N Country Club Rd
Tucson, AZ 85716
contact@mzbiolabs.com
www.mzbiolabs.com

Certificate of Analysis

KLOW (GHK-Cu, BPC-157, Thymosin beta4, KPV) 80mg

Compounds : KPV, GHK-CU
BPC-157, Thymosin beta4
Client : Solid Peptides
Lot number : 2026-05-06 blue cap
Analysis date : 2026-05-18
Purity % : 99.74%
Method : HPLC-UV-MS

High Performance Liquid Chromatography (HPLC) UV – Purity Test



PEAK LIST		Number of detected peaks: 7		
	Time (min)	Area	%Area	
1	0.79	5.31E+04	60.57	GHK-Cu
2	1.49	8.06E+01	0.09	
3	2.32	1.29E+04	14.72	KPV
4	3.21	1.21E+02	0.14	
5	10.17	3.45E+01	0.04	
6	10.54	1.38E+04	15.74	BPC-157
7	11.21	7.64E+03	8.71	Thymosin beta4

Overall Purity : 99.74

Analysis Performed by
Ken Pendarvis, ChE
Analytical Chemist
MZ Biolabs
contact@mzbiolabs.com

2026-05-22

Note: Injectable peptides may contain salts and sugars to aid in solubility and act as pH buffers. These are not normally detected using UV and are not considered impurities.



MZ Biolabs
2102 N Country Club Rd
Tucson, AZ 85716
contact@mzbiolabs.com
www.mzbiolabs.com

GHK-Cu, BPC-157, Thymosin beta4, KPV

Mass Spectrometry (MS) – Identity Test

Identity confirmed using HPLC-MS

Molecular weight calculated using monoisotopic m/z values from mass spectrum

GHK-Cu PubChem CID: 71587328

<https://pubchem.ncbi.nlm.nih.gov/compound/71587328>

Expected monoisotopic mass : 402.10 Da

Measured monoisotopic mass : 402.15 Da

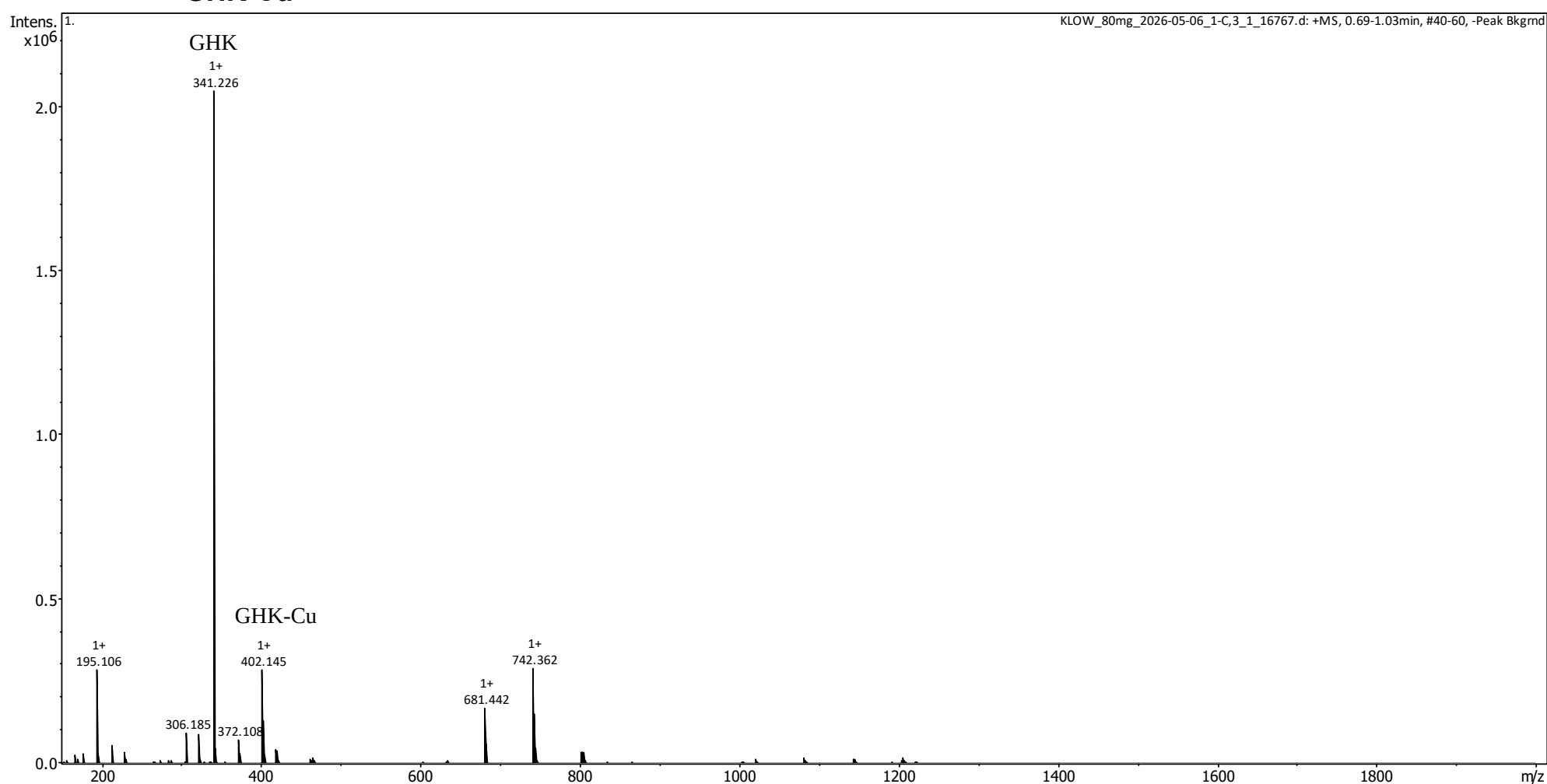
Molecular weight confirmed

Note : Monoisotopic m/z values are not easily seen in full spectrum view for larger molecules and peptides.

The dominant isotopic peak (base peak) shown in the spectrum below can be used to approximate the average molecular weight frequently reported by vendors and databases as a secondary means of confirmation.

Recorded MS spectrum

GHK-Cu



Analysis Performed by
Ken Pendarvis, ChE
Analytical Chemist
MZ Biolabs
contact@mzbiolabs.com

2026-05-22



MZ Biolabs
2102 N Country Club Rd
Tucson, AZ 85716
contact@mzbiolabs.com
www.mzbiolabs.com

GHK-Cu, BPC-157, Thymosin beta4, KPV

Mass Spectrometry (MS) – Identity Test

Identity confirmed using HPLC-MS

Molecular weight calculated using monoisotopic m/z values from mass spectrum

BPC-157 PubChem CID: 9941957

<https://pubchem.ncbi.nlm.nih.gov/compound/9941957>

Expected monoisotopic mass : 1418.70 Da

Measured monoisotopic mass : 1418.84 Da

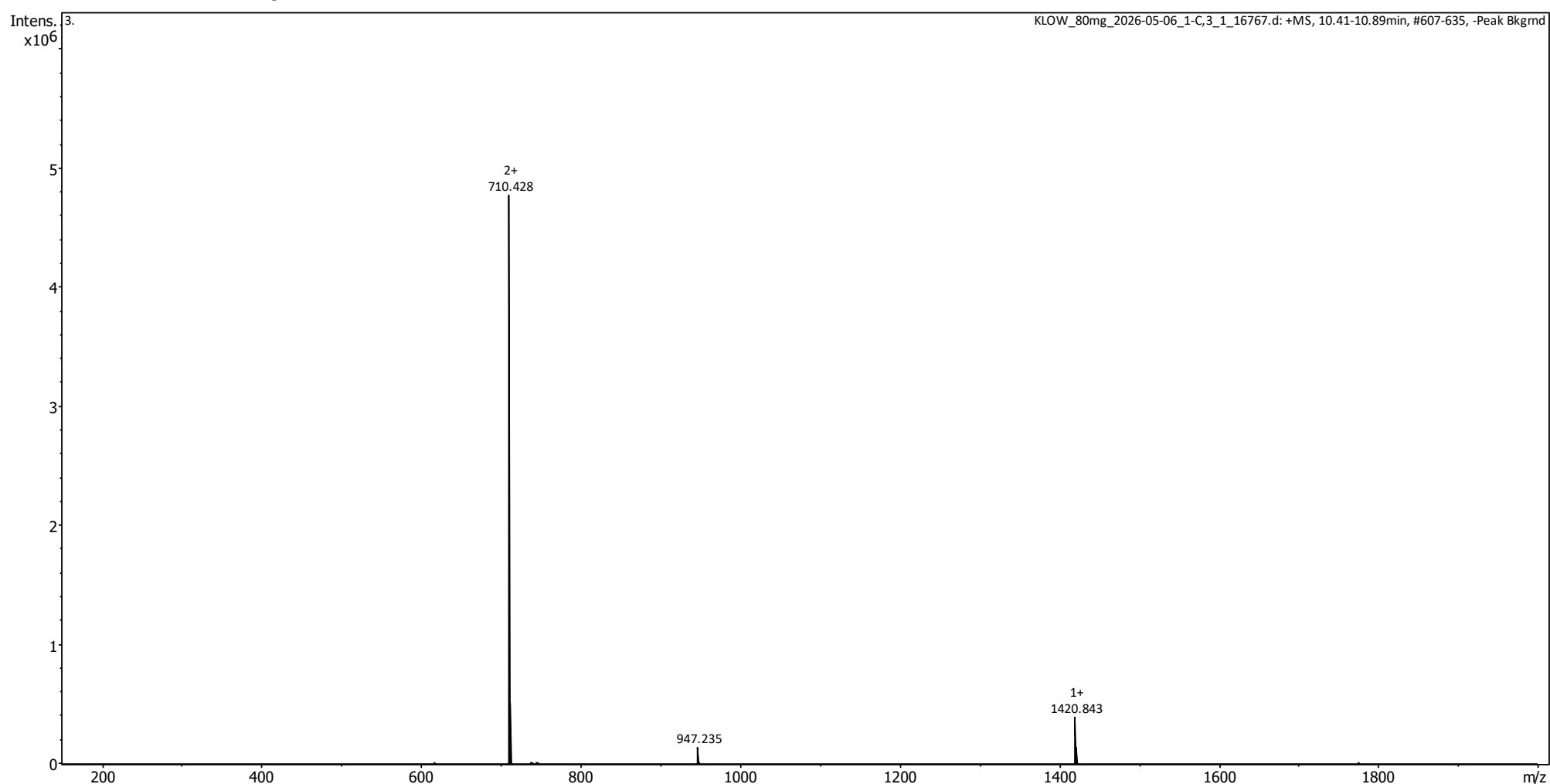
Molecular weight confirmed

Note : Monoisotopic m/z values are not easily seen in full spectrum view for larger molecules and peptides.

The dominant isotopic peak (base peak) shown in the spectrum below can be used to approximate the average molecular weight frequently reported by vendors and databases as a secondary means of confirmation.

Recorded MS spectrum

BPC-157



Analysis Performed by
Ken Pendarvis, ChE
Analytical Chemist
MZ Biolabs
contact@mzbiolabs.com

2026-05-22



MZ Biolabs
2102 N Country Club Rd
Tucson, AZ 85716
contact@mzbiolabs.com
www.mzbiolabs.com

GHK-Cu, BPC-157, Thymosin beta4, KPV

Mass Spectrometry (MS) – Identity Test

Identity confirmed using HPLC-MS

Molecular weight calculated using monoisotopic m/z values from mass spectrum

Thymosin beta4 PubChem CID: 16132341

<https://pubchem.ncbi.nlm.nih.gov/compound/16132341>

Expected monoisotopic mass : 4960.48 Da

Measured monoisotopic mass : 4960.56 Da

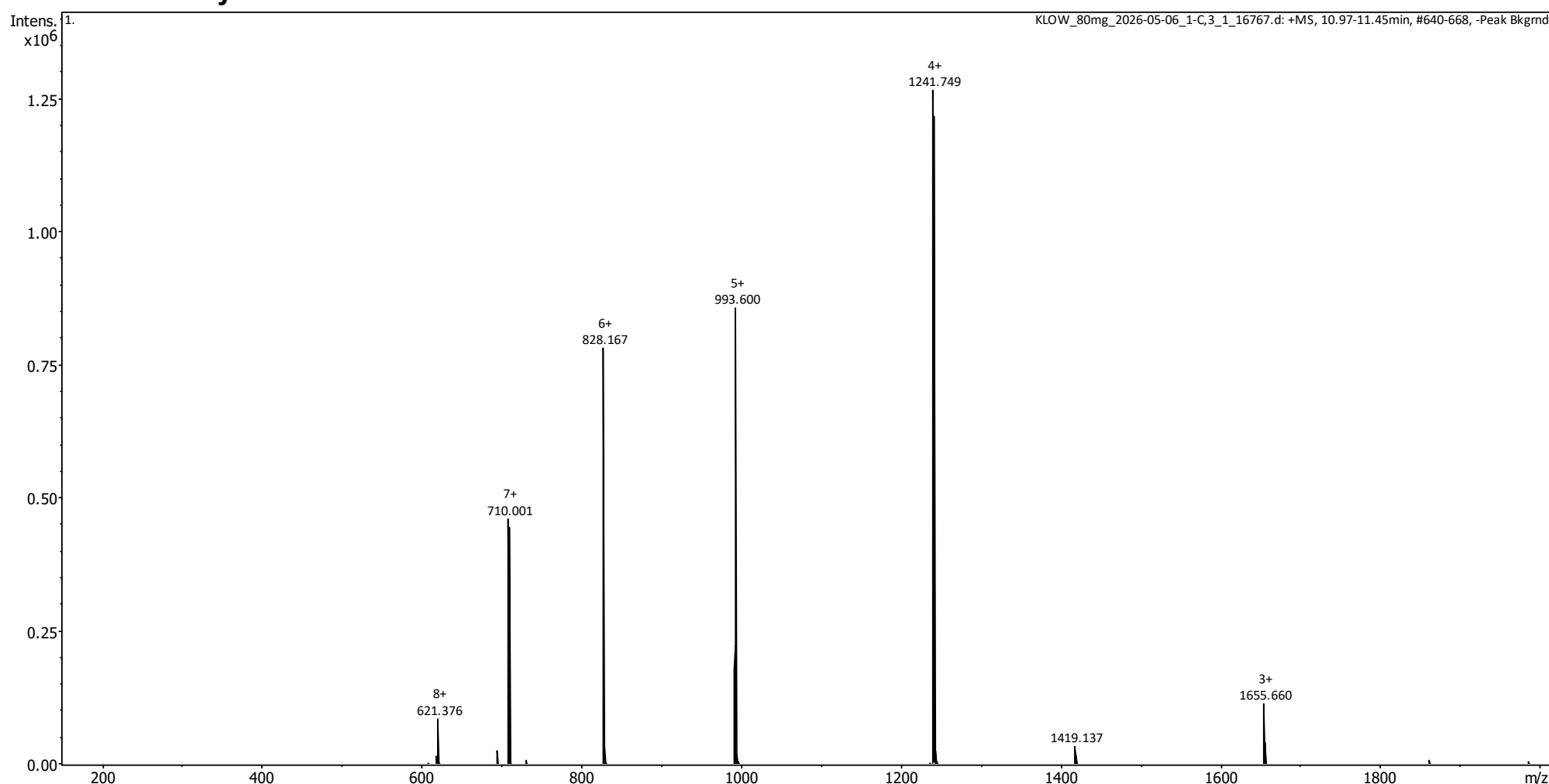
Molecular weight confirmed

Note : Monoisotopic m/z values are not easily seen in full spectrum view for larger molecules and peptides.

The dominant isotopic peak (base peak) shown in the spectrum below can be used to approximate the average molecular weight frequently reported by vendors and databases as a secondary means of confirmation.

Recorded MS spectrum

Thymosin beta4



Analysis Performed by
Ken Pendarvis, ChE
Analytical Chemist
MZ Biolabs
contact@mzbiolabs.com

2025-07-01



MZ Biolabs
2102 N Country Club Rd
Tucson, AZ 85716
contact@mzbiolabs.com
www.mzbiolabs.com

GHK-Cu, BPC-157, Thymosin beta4, KPV

Mass Spectrometry (MS) – Identity Test

Identity confirmed using HPLC-MS

Molecular weight calculated using monoisotopic m/z values from mass spectrum

KPV PubChem CID : 125672

<https://pubchem.ncbi.nlm.nih.gov/compound/125672>

Expected monoisotopic mass : 342.23 Da

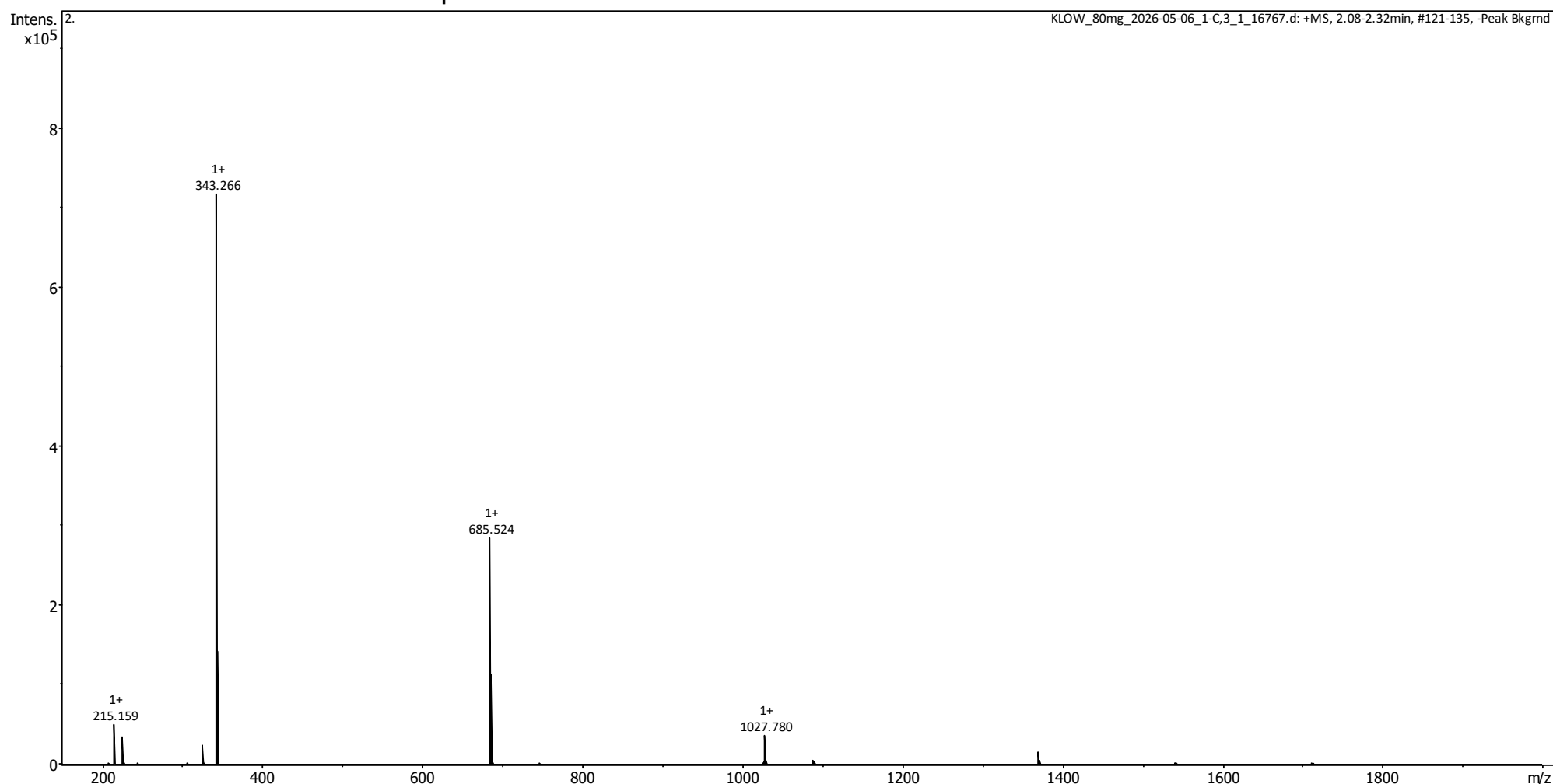
Measured monoisotopic mass : 342.27 Da

Molecular weight confirmed

Note : Monoisotopic m/z values are not easily seen in full spectrum view for larger molecules and peptides.

The dominant isotopic peak (base peak) shown in the spectrum below can be used to approximate the average molecular weight frequently reported by vendors and databases as a secondary means of confirmation.

KPV Recorded MS spectrum



Analysis Performed by
Ken Pendarvis, ChE
Analytical Chemist
MZ Biolabs
contact@mzbiolabs.com

2025-07-01